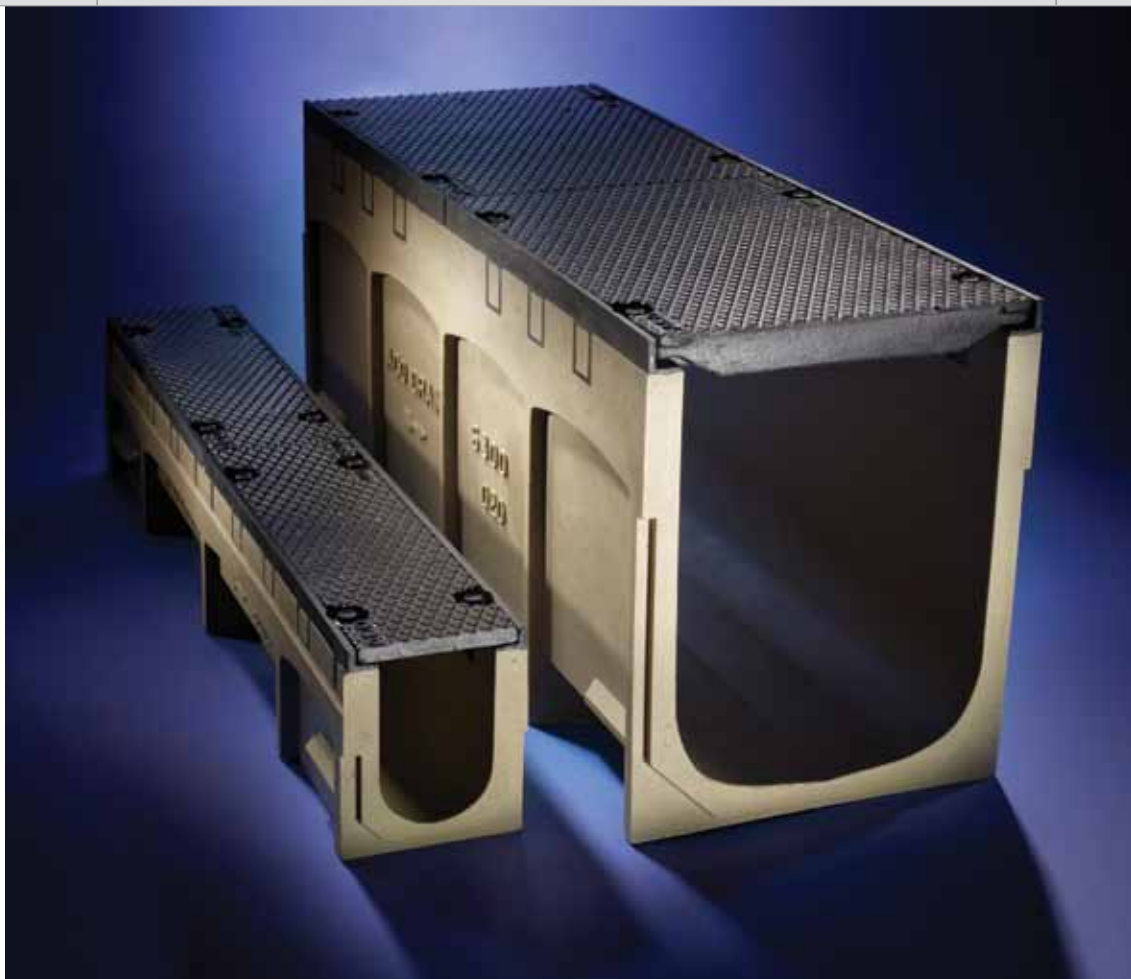


Utility Management  
System



## ACO UTILITYDUCT

### Ducting System for Surface Level Utilities

*Modular ducting channels with solid covers*



## The ACO Group

Established in 1946, the ACO Group has been a major manufacturer of products for the construction and building industry for more than 60 years.

The Group operates on a global basis and has companies in more than 40 countries with manufacturing on 4 continents.

ACO employs more than 3,500 people and has sales in excess of \$600 million.

ACO has been present in the USA since 1978 and has offices and manufacturing facilities nationwide.



## ACO UtilityDuct

A surface ducting system is designed to protect cables, pipes etc. against external influences. The duct also acts as a shield to prevent its potentially hazardous contents from causing damage or injury to maintenance workers, passing pedestrians and nearby property.

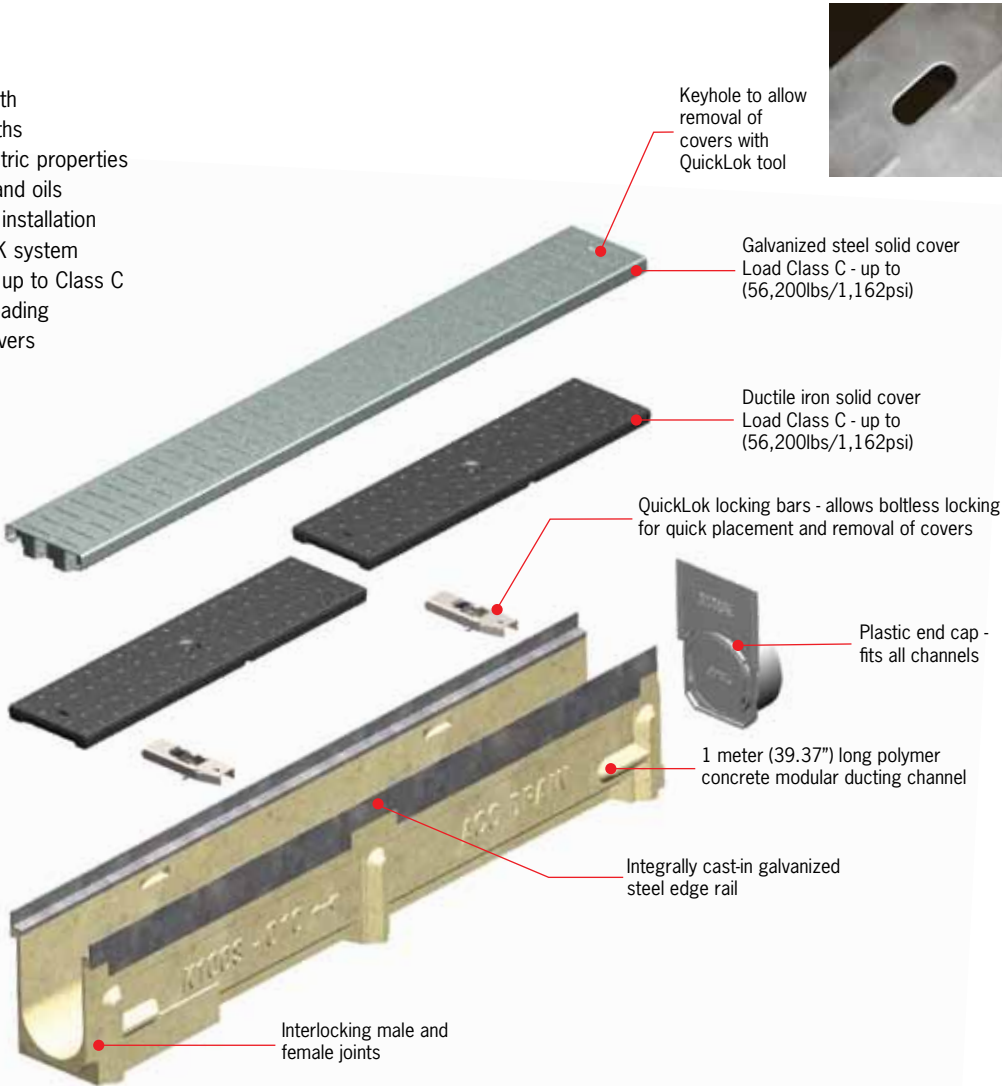
A duct allows continual access along a cable/pipe route via removable covers.

Polymer concrete is an ideal material for electrical ducts as it offers excellent insulation properties - electrical resistivity rating of  $1 \times 10^8 \Omega/\text{sq}$ .

**DK100 Ducting**

**Features**

- 4" (100mm) internal width
- Choice of 4 neutral depths
- Excellent material dielectric properties
- Resistant to chemicals and oils
- Cost effective and easy installation
- Light to medium duty DK system capable of withstanding up to Class C (56,200lbs/1,162psi) loading
- Choice of removable covers

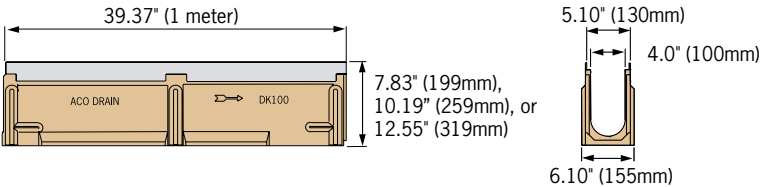


**DK100 Ducting Parts List**

Description	Invert Depth	Part No.	Weight (lbs)
DK010 polymer concrete duct	6.96"	99272	36.8
DK020 polymer concrete duct	9.33"	99295	46.0
DK030 polymer concrete duct	11.69"	99317	55.8
DK100 End cap	-	96825	0.4
<b>Cover Options</b>			
Type 416 Galvanized steel solid cover - 1 meter (39.37")	-	02590	10.1
Type 456 Ductile iron solid cover - 0.5 meter (19.69") use 2 per channel	-	06573	14.2
QuickLok locking bar (2 per channel required)	-	02899	

**Notes:**

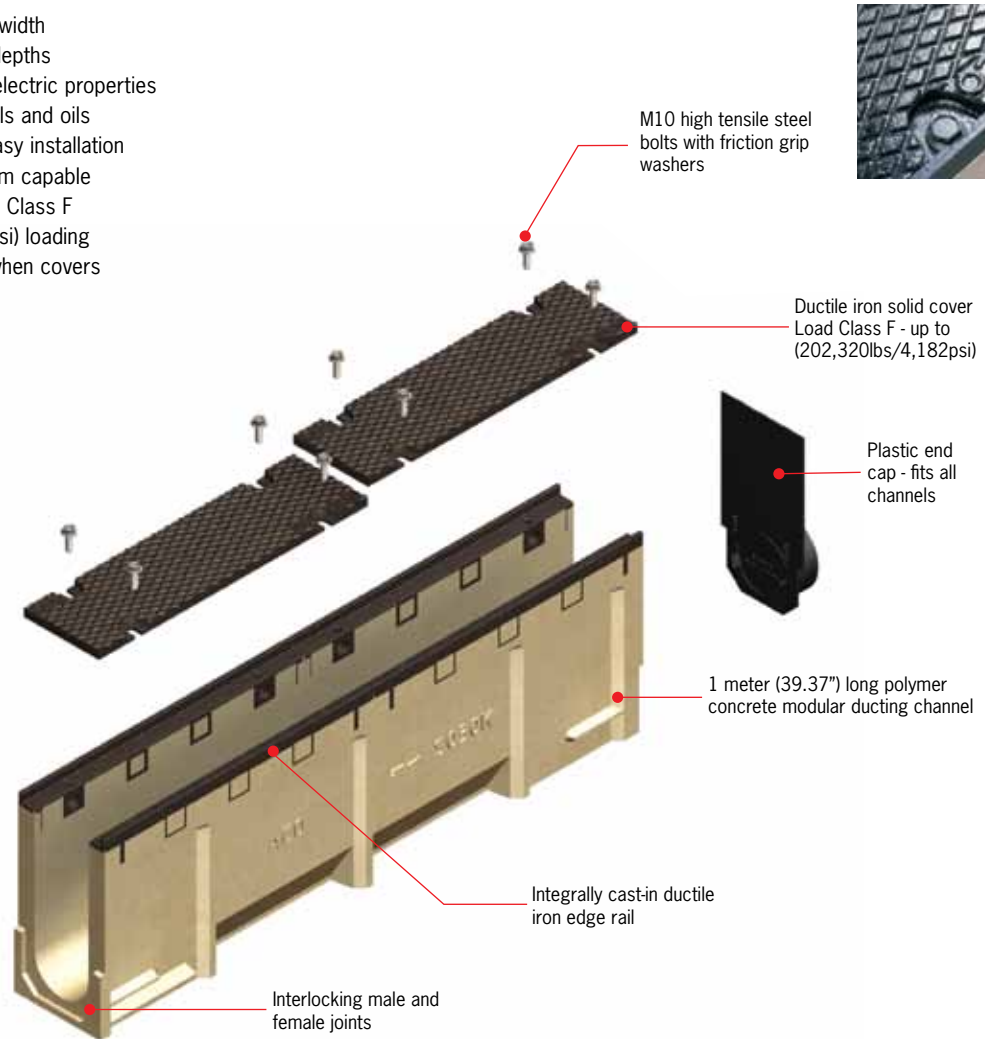
1. Units are sold as channel and covers separately - add weights for total unit weight.



## DS100 Ducting

### Features

- 4" (100mm) internal width
- Choice of 3 neutral depths
- Excellent material dielectric properties
- Resistant to chemicals and oils
- Cost effective and easy installation
- Heavy duty DS system capable of withstanding up to Class F (202,320lbs/4,182psi) loading
- Continuous access when covers removed

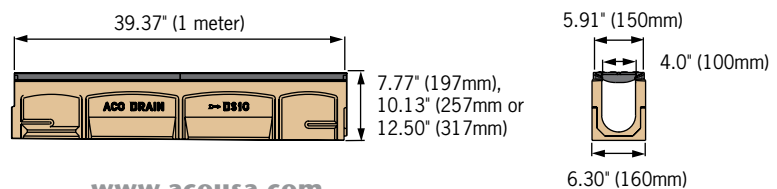


### DS100 Ducting Parts List

Description	Invert Depth	Part No.	Weight (lbs)	
			Total <sup>1</sup>	Cover <sup>2</sup>
DS010 polymer concrete duct with ductile iron covers	6.77"	99266	64.0	15.4
DS020 polymer concrete duct with ductile iron covers	9.13"	99267	65.0	15.4
DS030 polymer concrete duct with ductile iron covers	11.50"	99268	68.0	15.4
DS100 End cap	-	95063		0.4

#### Notes:

1. Units are sold complete (channel and 2 covers) - total weight is complete unit.
2. Cover weights are provided as lifting weight information (individual lids only).

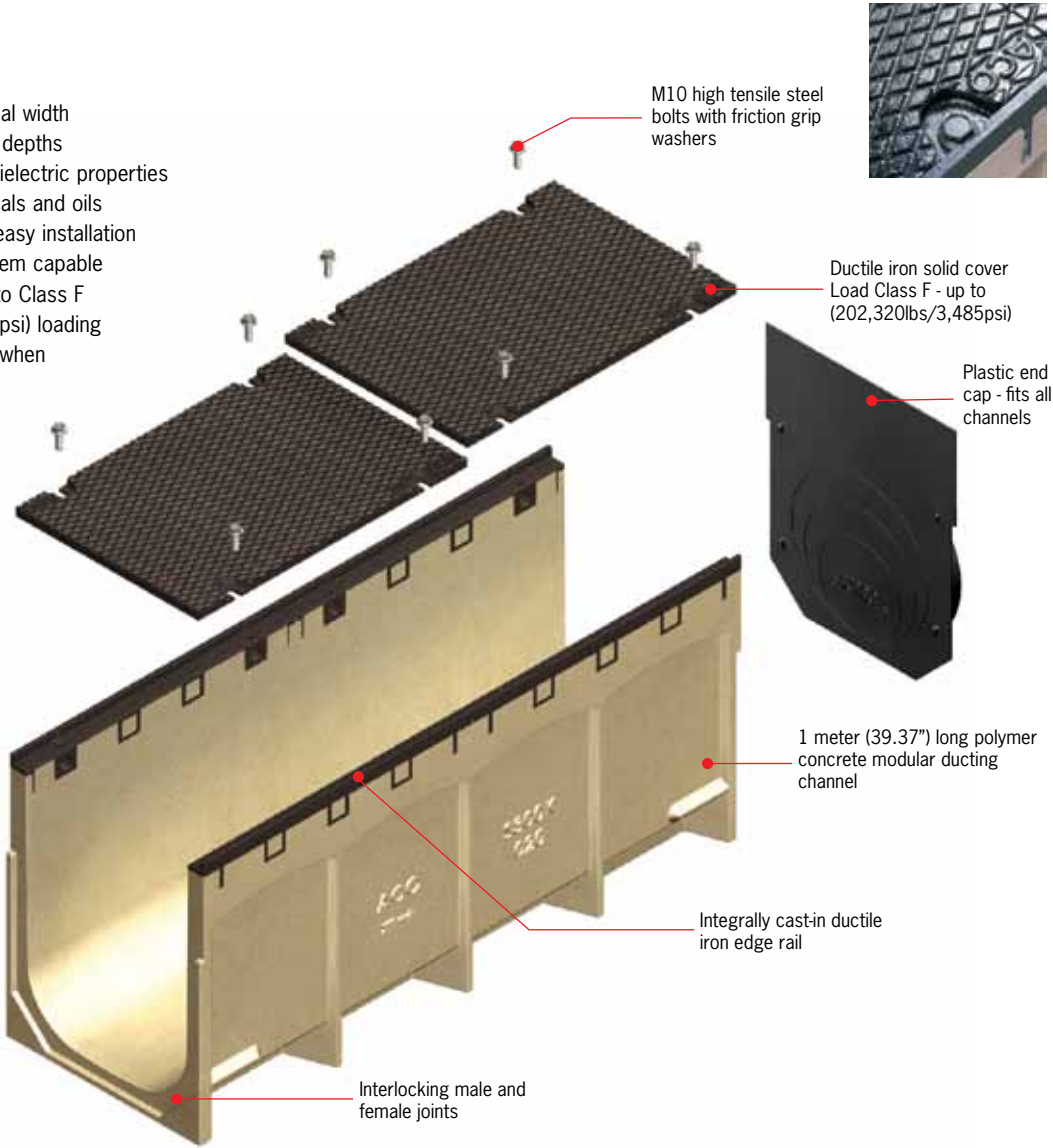


www.acousa.com

**DS300 Ducting**

**Features**

- 12" (100mm) internal width
- Choice of 4 neutral depths
- Excellent material dielectric properties
- Resistant to chemicals and oils
- Cost effective and easy installation
- Heavy duty DS system capable of withstanding up to Class F (202,320lbs/3,485psi) loading
- Continuous access when covers removed

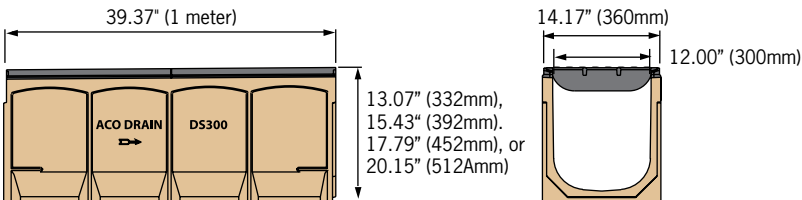


**DS300 Ducting Parts List**

Description	Invert Depth	Part No.	Weight (lbs)	
			Total <sup>1</sup>	Cover <sup>2</sup>
DS300 01 polymer concrete duct with ductile iron covers	11.89"	<b>99258</b>	125.2	48.4
DS300 010 polymer concrete duct with ductile iron covers	14.25"	<b>99260</b>	145.6	48.4
DS300 020 polymer concrete duct with ductile iron covers	16.61"	<b>99261</b>	159.2	48.4
DS300 030 polymer concrete duct with ductile iron covers	18.98"	<b>99262</b>	167.6	48.4
DS300 End cap	-	<b>98132</b>		3.4

**Notes:**

1. Units are sold complete (channel and 2 covers) - total weight is complete unit.
2. Cover weights are provided as lifting weight information (individual lids only).





## Other ACO product lines

- **ACO DRAIN**  
ACO Drain is the world's leading modular trench drain system for commercial, industrial and landscape applications.
- **ACO SPORT**  
ACO Sport is a range of drainage and building accessories for track & field, used at Olympic sites since 1972.
- **ACO ROAD**  
ACO Road is a range of drainage products engineered for the unique design and performance demands of highways, urban roads and bridges.
- **ACO PAVE**  
ACO Pave is a range of polymer concrete tactile pavers for ADA compliant drop curbs and ramps.
- **AQUADUCT**  
Aquaduct custom designs and manufactures fiberglass trench drain systems to meet individual project requirements.
- **MARKANT BY ACO**  
Markant by ACO range of building products designed for the residential builder and DIY enthusiast.
- **QUARTZ BY ACO**  
QuARTz by ACO range of stainless steel, linear shower drains for custom tiled showers.

### ACO Polymer Products, Inc.

#### East Sales Office

P.O. Box 245  
Chardon, OH 44024  
Tel: (440) 285-7000  
Toll free: (800) 543-4764  
Fax: (440) 285-7005

#### West Sales Office

P.O. Box 12067  
Casa Grande, AZ 85130  
Tel: (520) 421-9988  
Toll Free: (888) 490-9552  
Fax: (520) 421-9899

#### Electronic Contact:

info@acousa.com  
www.acousa.com



#### Follow us on

